

ARCHITECTS



PRINCIPAL ARCHITECT
Nitroop Kumar Reddy



PRINCIPAL DESIGNER
Rupama Reddy

INTERIOR DESIGNER
Pranaya Tuniki

CONTACT

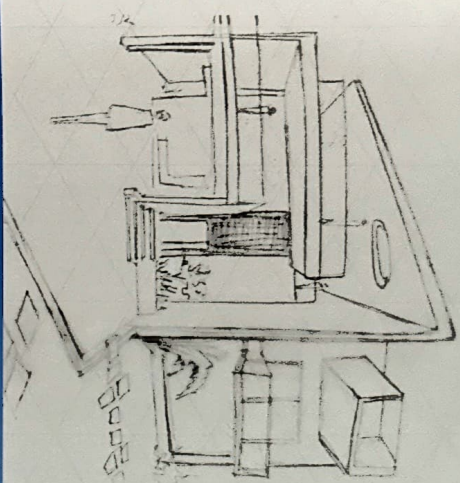
Plot No 319 / 320, 6th Floor, East Avenue
Ayyappa Society, Madhapur
Hyderabad 500281, Telangana
T: +91 40 23116454, 65576454
E: nyr@naarchitects.net
www.naarchitects.net

The H20 house is conceived with a contemporary, semi-minimalist approach in design with a double height water body as the central focal point, hence deriving its name. Situated in the residential urban context of Hyderabad, over an area of 12,500 sq. ft. and planned for a family of four, the home conceptually aims to reflect the personality of the family and their ideals. Without adopting any complex structures or unique decoration accessories, this charismatic home is novel with its intelligent interplay of spaces, design inspired by nature and simple textures.

The building outline evolved with the idea of retaining the two old existing trees on the site and providing them with enough space to grow in the future. The spatial planning evolves from the simplistic notion of bringing natural daylight into the built volume, whilst creating a connection between the large exterior and interior spaces that brings in a unique sense of scale. The rectangular shape of the site allows for the elevation to be taken behind the built form with landscaping in front. The unforced elegance of the elevation is a manifestation of the layout of internal spaces. Endowing the main entrance its due importance, a magnificent double height illusion is created at the main door. A projecting vertical wall along with a cantilevered roof seems to hold the entire facade together.

In an attempt to open up the floor levels onto one another, a glass elevator is provided to give the connection between the floors, which is binding the levels together. A water body with a Swarovski embedded concrete wall in the ground floor blends with the double height space and fixed glass that brings the view of the garden outside breaking the barrier between the outdoor and indoor spaces. Large balcony projections form a visual connection between the building, its site and a glass wall that overlooks the garden outside. The linear cantilevered infinity pool on the second floor complements the circular void in the cantilevered roof on the other side. A green pocket introduced behind the staircase and the powder room on the ground floor further blurs the boundary between the outside and inside, while forming a visual connection with the formal living room, giving it an outdoor 'green' view. The staircase is designed in marble and wood, complementing the green pocket behind it.

The thick cantilever slab on the terrace floor level has a circular puncture (12' in diameter), a void that helps to manipulate and break the monotony of the massing in the elevation. Contrasting the lines of contemporary elevation, this circular void blends with the projecting nature of the balconies. A bar-lounge area on the second floor overlooks the city-scape of its surrounding with magnificent views. The covered area of the bar is an opportunity to play with solar panels to reduce the overall power consumption of the residence. The interiors are manipulated to be simplistic in order to balance the drama of the natural surroundings.

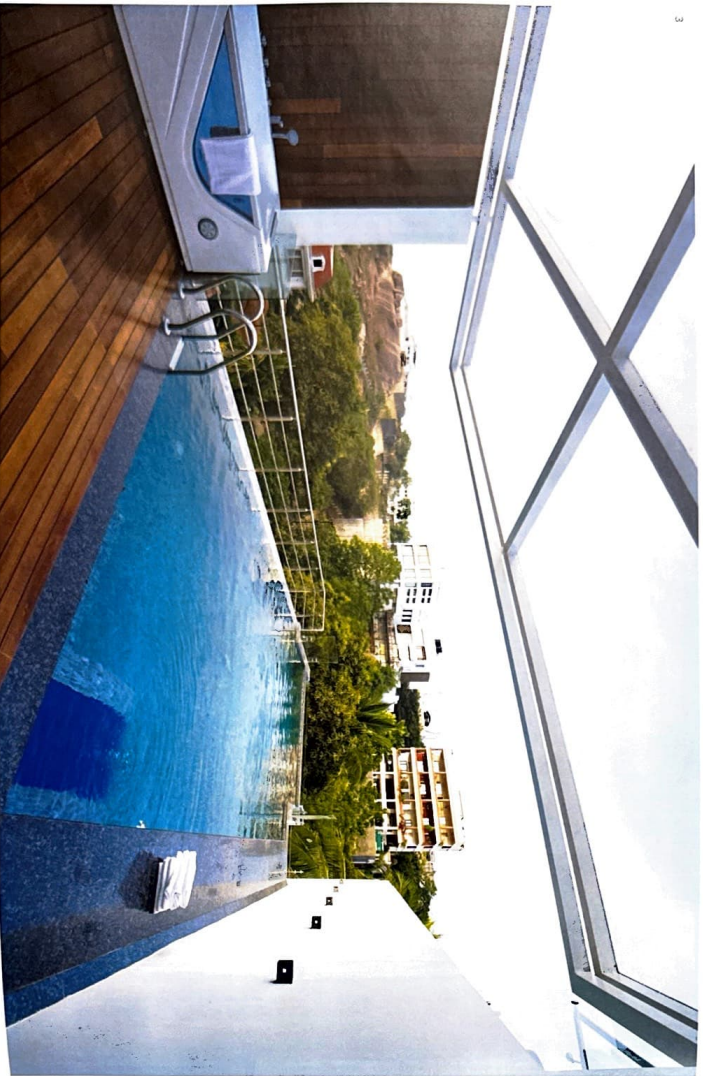
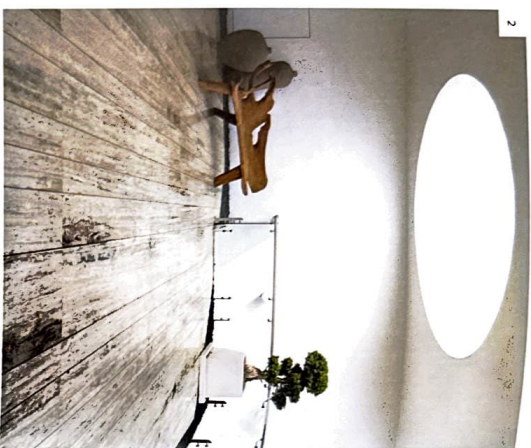


The spatial planning evolves from the simplistic notion of bringing natural daylight into the built volume, whilst creating a connection between the large exterior and interior spaces that brings in a unique sense of scale. The rectangular shape of the site allows for the elevation to be taken behind the built form with landscaping in front.



1. A vigorous play of surfaces of volumes.

H20 HOUSE | 2014
10,600 SQ. FT.
HYDERABAD, TELANGANA



2 Skylight brings in natural light from the skies above into the interiors

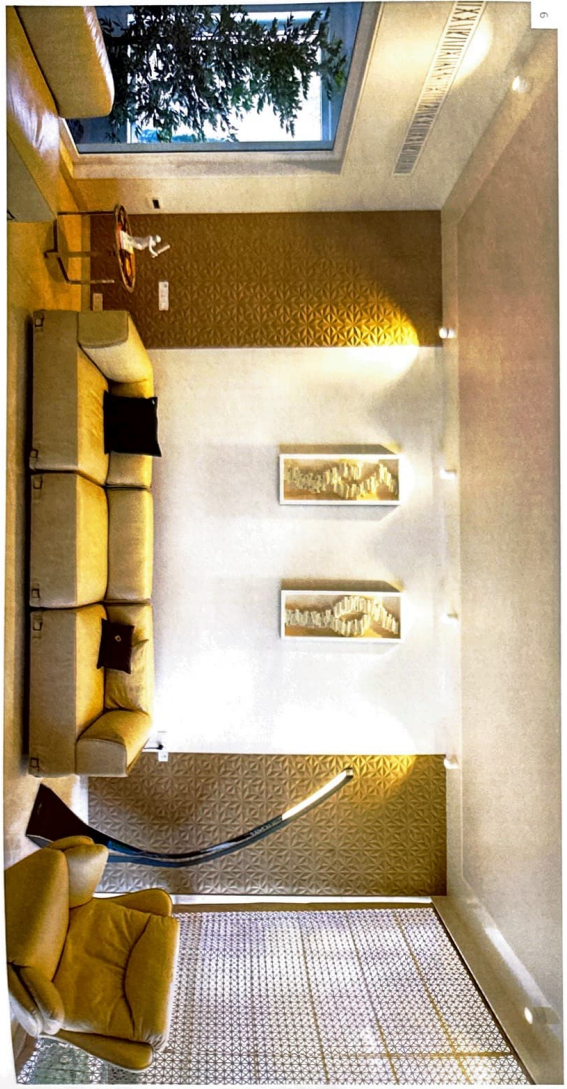
3 Infinity lap pool partially covered with a cantilevered roof

4 Double-height, internal landscaped court





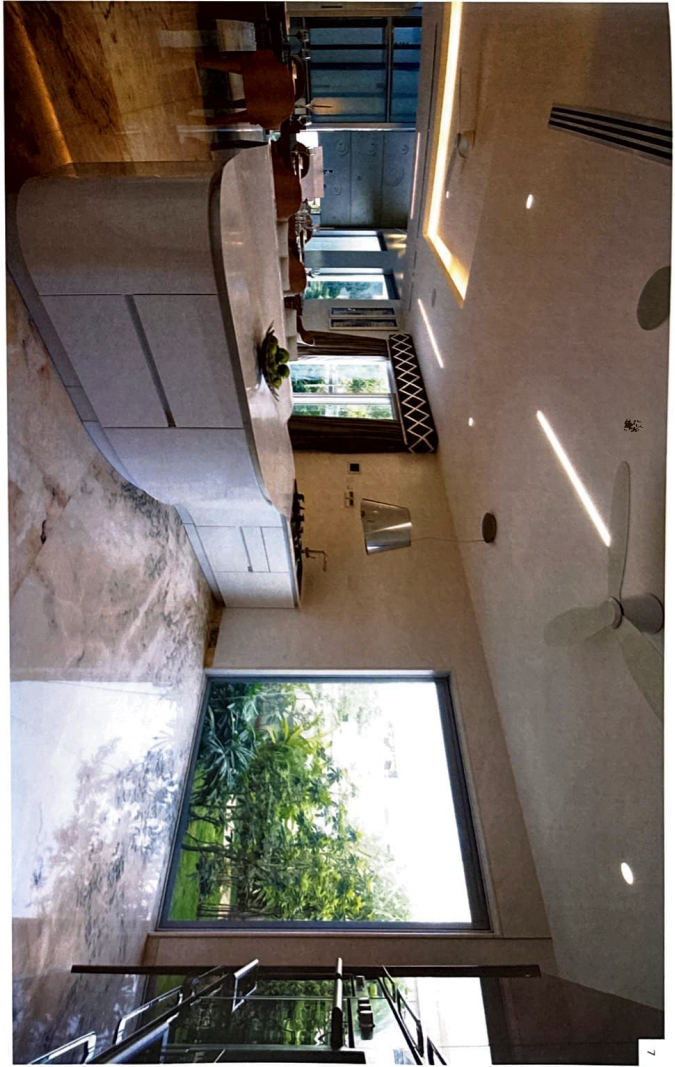
5



6

5. Dramatic master bedroom with striking furniture.

6. Formal living area. Design idea by Giogetti. A neutral palette of beige furnishings, off-white floor and ceilings is accentuated through daylight from large windows.



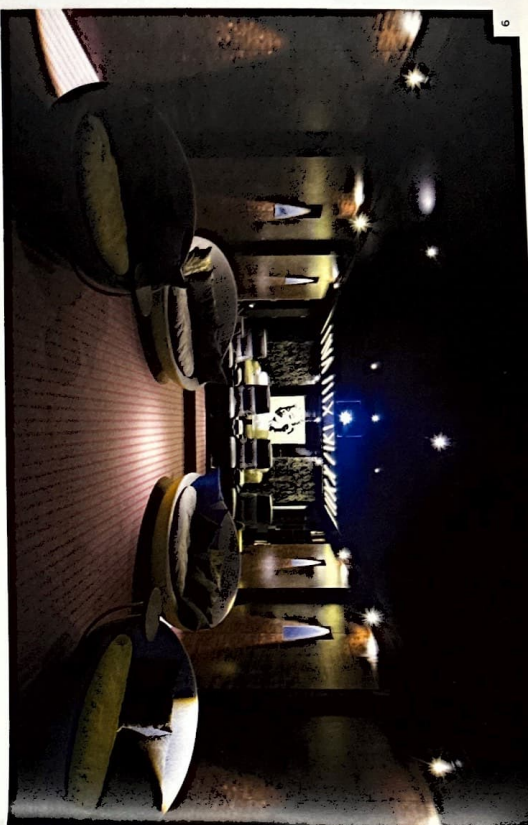
7



8

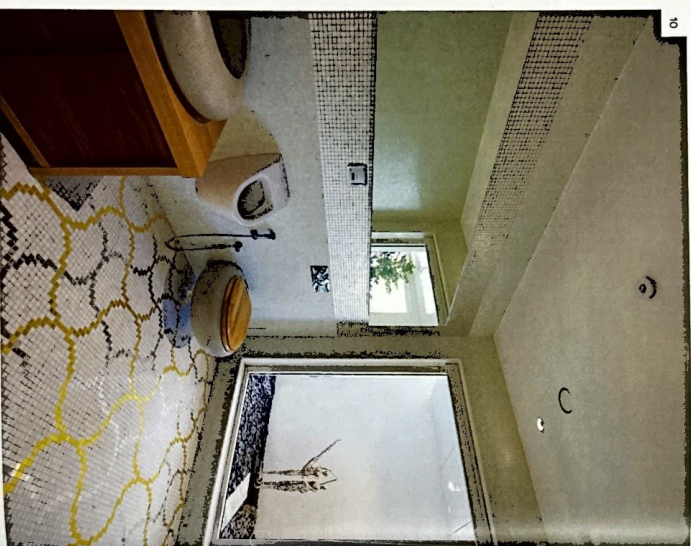
7. Formal dining area with Kitchen Island. Seamless views into the landscape through large glass windows that capture existing trees on the site. Design idea by Asian Rain: White walls, ceilings, floors and furniture enclose the space into a serene volume that offsets the views.

8. Open bar with panoramic views of the cityscape.



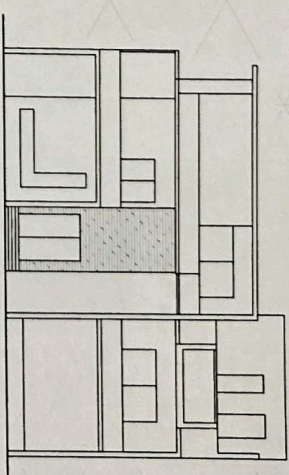
9

9. Private entertainment lounge with easy interiors.

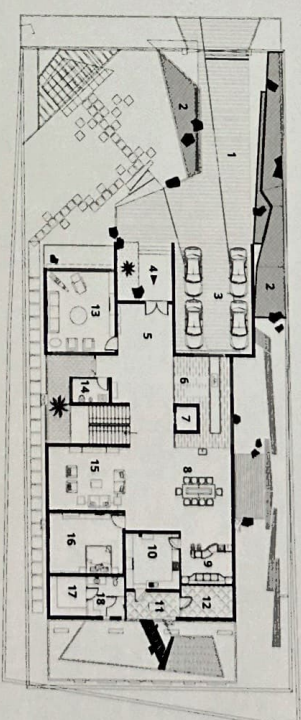


10

10. Stark white fixtures highlighted through elegant mosaic flooring patterns in white, gold and silver.



NORTH SIDE ELEVATION



GROUND FLOOR PLAN

- 1. DRIVEWAY, 2. POND, 3. GAS PARKING, 4. ENTRANCE, 5. LOBBY, 6. WAITER BODY, 7. ELEVATOR, 8. DINING AREA, 9. DRY KITCHEN, 10. WET KITCHEN, 11. UTILITY, 12. STORE, 13. DRAINING ROOM, 14. POWDER ROOM, 15. LIVING ROOM, 16. GRANDMOTHERS ROOM, 17. CLOSET, 18. TOILET.

UNIQUE MATERIAL APPLICATIONS

- WINDOWS: Veka
- FLOORING: Michelangelo from Classic Marble, Archaean Marbles & Tiles
- LIGHTING: Lucent, Silux from Lux Logics, Hyderabad
- COLOUR: Asian Paints
- SANITARYWARE: Villeroy & Boch from Valueline
- BATH FITTINGS: Fantini from Valueline
- FURNITURE: Giogetti, Fendi, Aston Martin, Mercedes Benz, Alta Moda, Longli from Mexili Design
- FURNISHING: Dreams Furnishing, Mumbai
- HARDWARE: Benzoville from Stellar
- KITCHEN: Aani from level 10
- WOOD: Natural Wood from Stellar
- FALSE CEILING: Dupont Corian
- SECURITY: Zicom

TILES: Granitfiandre from Aparna Unispace
TREES: Unique Trees

KEY CONTRIBUTORS

- STRUCTURAL: Sri Designs, Hyderabad
- CIVIL: PVR Constructions, Hyderabad
- LANDSCAPE: Progress Landscape, Pondicherry

PHOTOGRAPHY BY: SEBASTIAN ZACHARIAH

