



Client : Balu Chowdhary & Supraja

Location : Hyderabad, Telangana

Built-up Area : 1124 Sq m

Architectural Firm : N A Architects
Hyderabad, Telangana Web www.naarchitects.net

Designer in Charge : Nallari Niroop Reddy & Rupana Reddy

Structural Engineer : Sri Designs- Srinivas

Landscape Consultant : Progress Landscape- Kaala

Contractor : Ramachandra

Photography Credits : N A Architects

H2O HOUSE

While the exterior is defined by fiercely geometrical formality realised in an austere palette consisting largely of whites, wood and glass, the straight forward spaces of the interior indulge in a multiplicity of texture, detail and decoration. The focal point of the H2O house is undisputedly the double-height water body framed by the Swarovski-embedded concrete wall.

Overview & Inspiration

The H2O House is located on a quadrilateral site in Jubilee Hills, Hyderabad. The site geometry has been 'corrected' in keeping with the Vaastu belief systems, such that it is treated as a clean rectangular parcel of land, accessed from its shorter edge. The house is set back from the site edges, leaving enough space for a generous driveway and front lawn, as well as a reasonable backyard.

Design

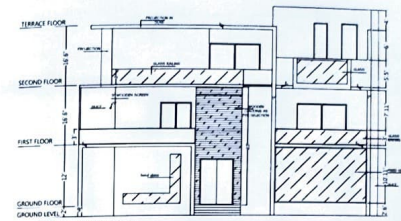
Jagged lines and sharply geometrical shapes make up the landscape composition enveloping the house. Even the choice of plantation adheres to the prescription of the stark staccato design language. The forceful formality continues on the facade of the house. The mass containing the house recedes deeply, allowing the frontal elevation to be taken over by dramatically projecting horizontal and vertical planes - a composition completed by the sharply angular 8" thick concrete terrace floor slab and its bold circular puncture (12' in diameter), balanced by the cantilevering volume of the linear 'infinity' pool on the second floor. Glass parapets and a restricted palette of surface finishes enhance the sharp geometry of the facade. The main entrance door stands out strongly on the facade. The surface extending from its opening is rendered in a similar finish in order to impart an enhanced and imposing visual scale to the entrance porch.

Driven by a desire to draw maximum day light into the interior of the house and to connect exterior and interior spaces, glass has been employed generously and in a manner that adds to the experiential value of the house.

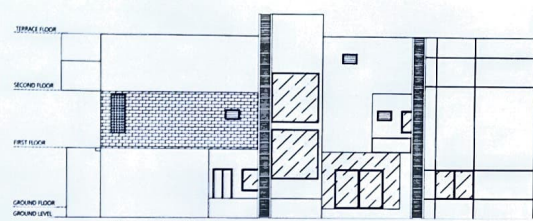
A glass elevator appears to float over the double-height water body and pocket of green by the staircase and powder room. It is visually connected with the formal living room that overlooks the front garden and is furnished with a backlit 'stretch fabric' ceiling and Fendi sofas. Spatially the interior of the house is defined by the large transition spaces, more than 14.5 feet wide.

The bar-cum-lounge on the second floor enjoys views to the surrounding cityscape. Its roof is used to provide solar panels for electricity generation.

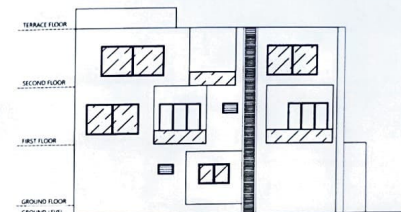




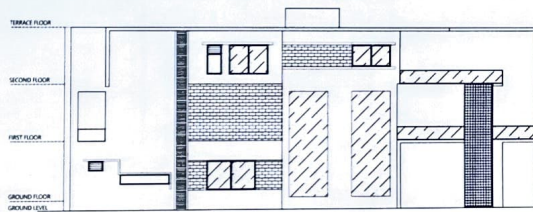
NORTH SIDE ELEVATION



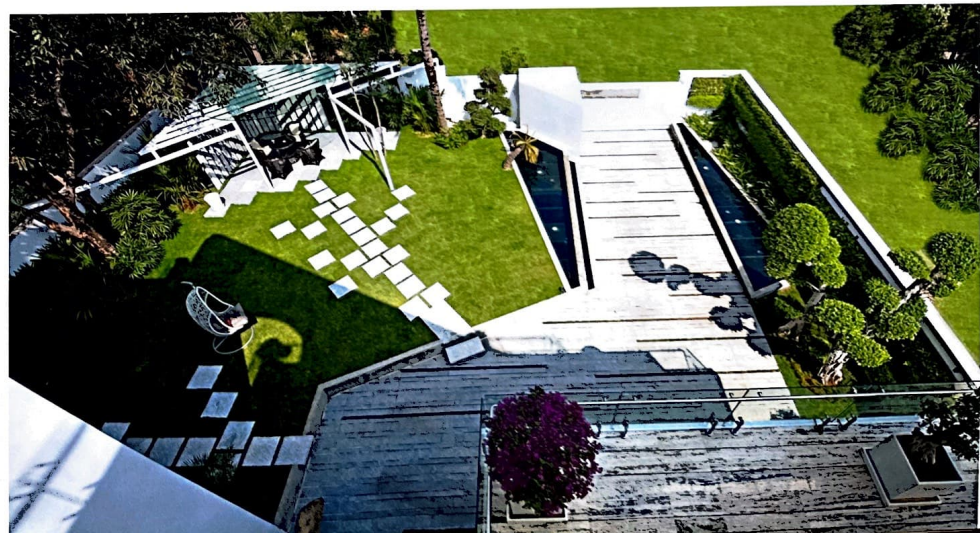
WEST SIDE ELEVATION

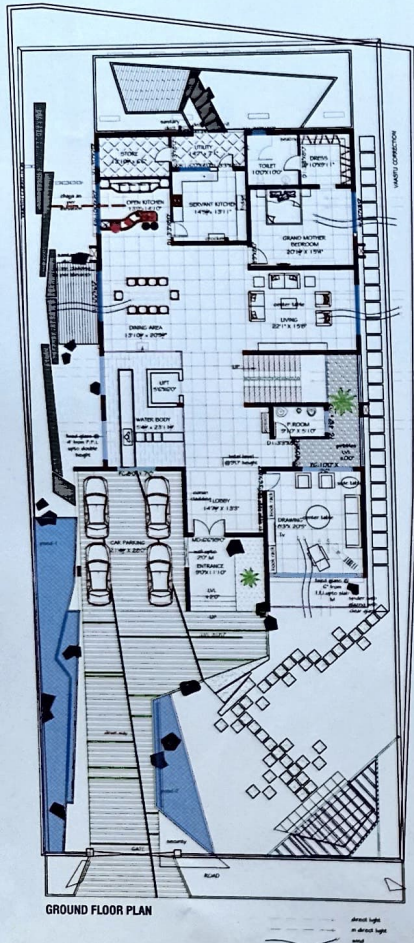


SOUTH SIDE ELEVATION



EAST SIDE ELEVATION

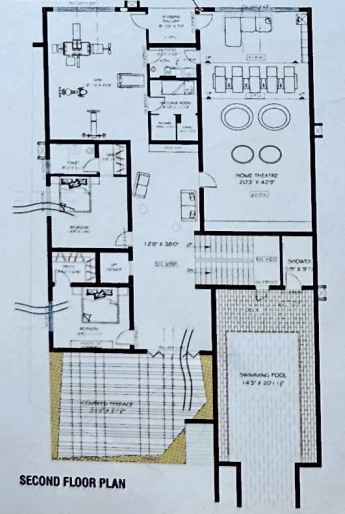




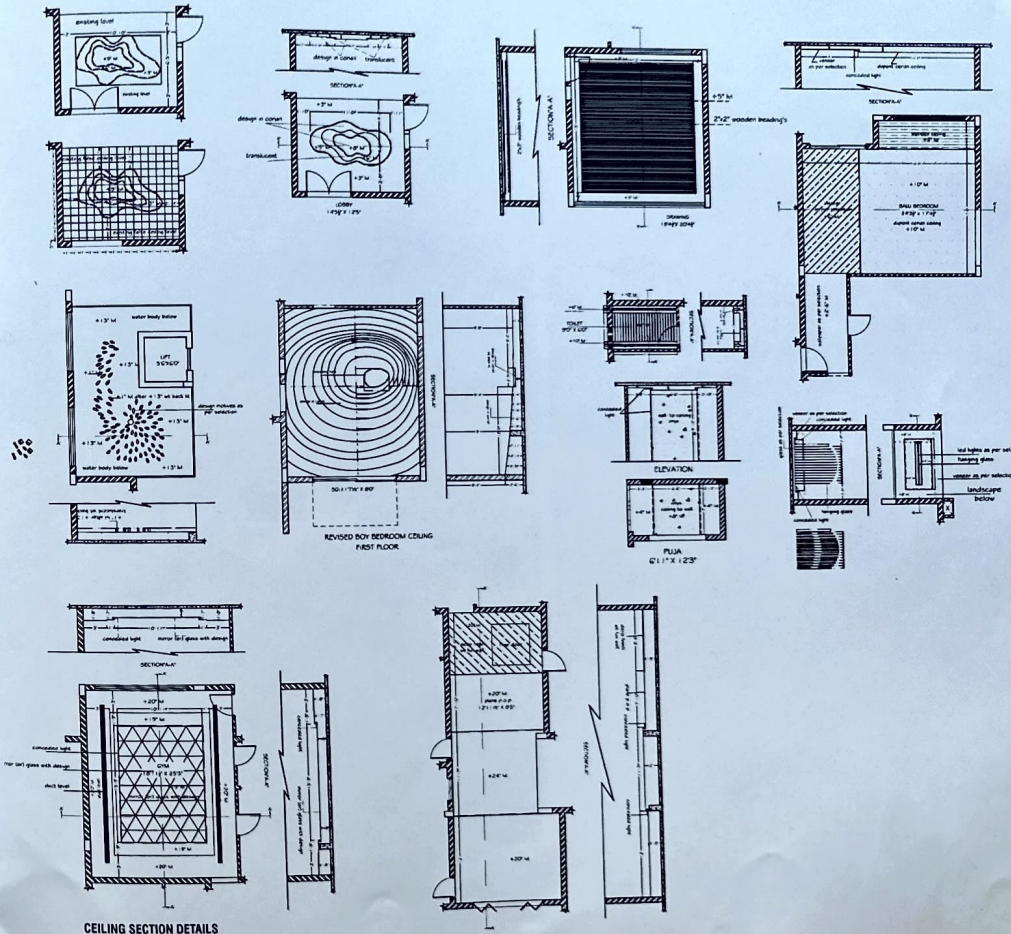
GROUND FLOOR PLAN



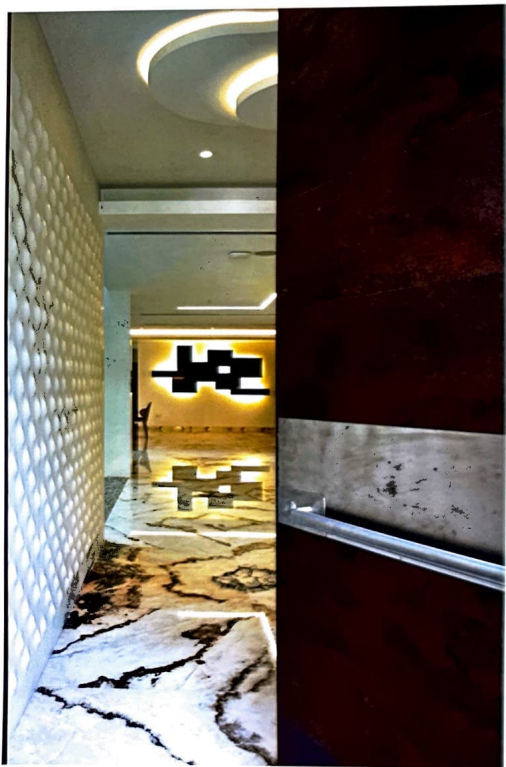
FIRST FLOOR PLAN

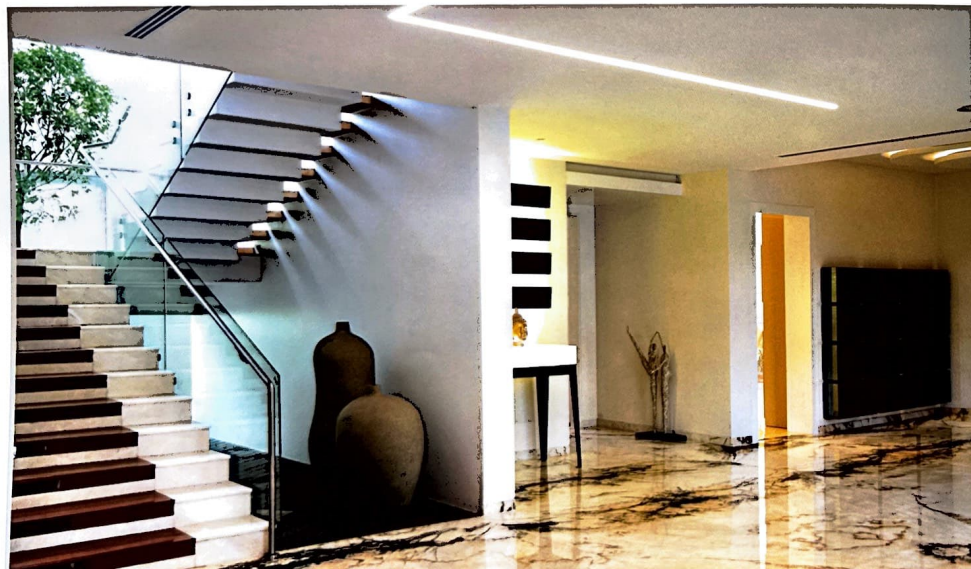


SECOND FLOOR PLAN



CEILING SECTION DETAILS





Contemporary Feature

The house liberally employs Corian on walls and ceiling surfaces, exploiting its plasticity and seamless finish in order to construct interesting plays of light and form. The master bedroom's ceiling, executed in Corian, is designed to lend the illusion of contoured layering. The ceiling of the 'girl's bedroom' features a backlit floral pattern executed in Corian. The design is complemented by a partially curved headboard of the bed and custom-designed pendant lights in floral fabric. And finally, the rippling pattern of the Corian ceiling in the 'boy's bedroom' is illuminated with recessed, warm toned lights in an attempt to paint the 'illusion of galaxy space on the ceiling'.

