



## THE NR HOUSE

Project Location: Hyderabad, India  
Client Name: Rupana Reddy & Niroop Kumar Reddy  
Plot Size: 92 ft x 180 ft  
Built up Area: 975 sq. m

Photography Courtesy: Photographix - Sebastian & Aditya



RUPANA REDDY &  
NIROOP KUMAR REDDY

## OVERVIEW

The NR HOUSE is located in Jubilee Hills in Hyderabad. Here celebrating the existing contours of the site, the architects mimic their form in the spatial and volumetric layout of the house, creating multiple floor levels including a mezzanine. They further emphasize the landscape by inviting it indoors through a series of glass sliders "curtain walls" and bay windows that convert open into closed spaces and play with the indoor-outdoor play possible in tropical architecture.

From the outset, the architects worked in close coordination with the MEP and HVAC engineers to optimise the energy performance of the NR House. Strategic decisions related to architectural elements such as openings- their placement, size and treatment reflect the sensitivity of the architects.

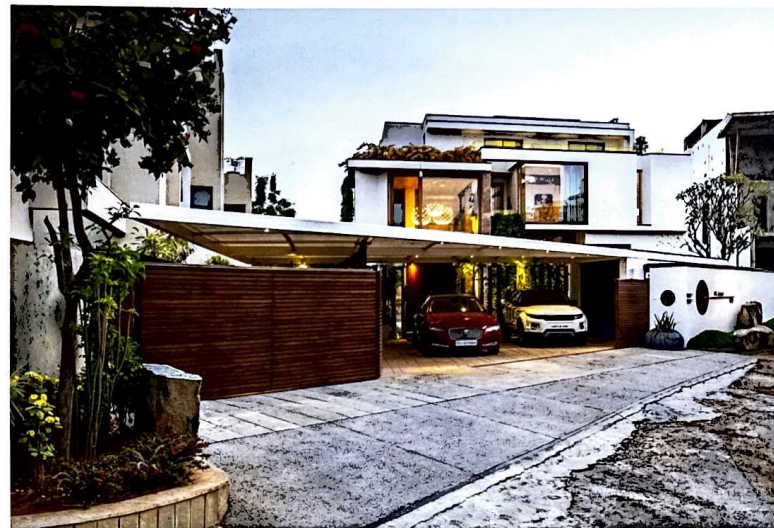
### NA Architects



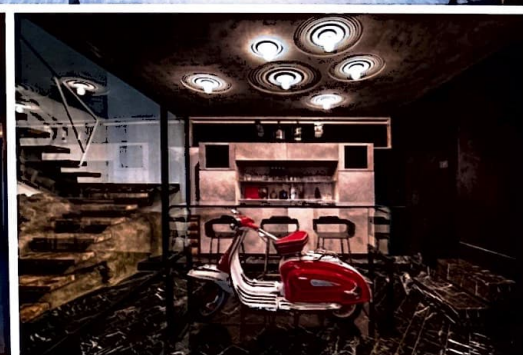
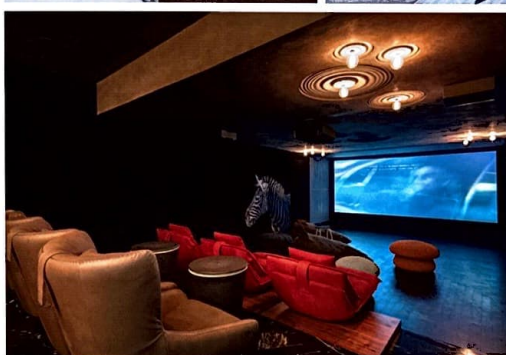
Design Firm: NA Architects  
Location: Hyderabad, India  
[www.instagram/na\\_architects](http://www.instagram/na_architects)  
Designer Incharge: N. Niroop Reddy  
Design Team: Niroop Kumar Reddy & Rupana Reddy  
Other Consultants: Sri Designs (structural consultants), & Progress Landscapes (landscape consultants)

### Company Profile

Rooted in his belief that, "The built environment is a business performance tool that should enhance your company's vision, reinforce the brand, enrich and inspire your staff and augment your business goals", Niroop Kumar Reddy founded an architecture practice, NA Architects (Formerly Niroop Associates), in 2011, that has since grown to acquire a global presence. He led his team to deliver a diverse portfolio of award-winning design and construction management projects, with offices in India, Dubai and Myanmar. NA Architects conducts for its clients, all phases of project execution- from concept right through construction management, structure and services audits, as well as peer reviews.

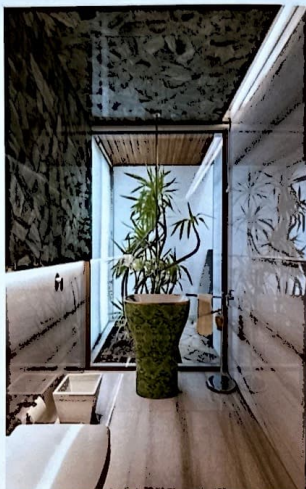


The façade is treated in a quiet, contemporary combination of wood and glass. On the other hand, each interior zone of the house receives its own unique treatment. It is then the juxtaposition of colour and texture that becomes a unifying thread in the spatial experience of the house.



The unfussy geometric swimming pool is dotted with soft sculptural forms in carefully curated art, furniture and vegetation. As such the house prescribes to the contemporary, informal open plan. Especially worth mentioning are the large rough-hewn rocks, mined from site, and placed in the living room as risers that enable the occupant to negotiate the split levels on the ground floor. These rocks echo not only offer visual interest but also echo the spirit of the landscape in the interior space. All the various living spaces on the ground floor coalesce into a large rolling central space that also becomes the circulation spine of the house.

The double height living room and foyer is flooded with natural light and decorated with bespoke metal and leather elements. The staircase carries one to the basement, where dark surfaces in marble and polished concrete create an intimate enclosure around a 20 year old vintage scooter, restored to a bright red. The bar itself is built in clear glass and recedes into the shell, allowing the restored red vintage scooter to take centre stage. The ceiling of the basement bar features concentric relief forms that take inspiration from ripples of water. The home theatre in the basement reinforces the playfulness of the bar with its plush tomato-red seating and large zebra artwork.



As warm sunlight filters into the interior of the dining room, materials are chosen to heighten the drama of contrast- of raw textures against smooth, clean lines, of geometric grids against soft curvaceous form, of tessellating patterns against expansive surfaces, of polished metal against rough industrial finishes, of the sculptural artefact against the sharply articulated box.

In the toilets including this powder room on the ground floor, large planters are built-in to obscure vast glazings, and offer a wonderful freshness to the rich marbles and onyx stones that clad the floor and the walls.

The guest room on the ground floor is clad in rich monochromes, including marble, leather, onyx, completed with brass detailing. Its en-suite toilet is cleverly treated as inserted volume marked by a warm wood cladding.



The central circulation spine of the house houses a sleek steel staircase, painted black to contrast with its warm wooden surrounds



The lounge on the first floor is carved from the general circulation area and anchored by a richly panelled saturated grey wall, into which the TV sits inserted. It is confronted by an impressive sofa whose back is ornately carved and readable from across the stairwell. Other singular pieces such as cinematic floor lamp and curvaceous arm chairs complete the composition.



Daughter's bedrooms on the other hand, retain a calm monotonous colour palette, punctuated only by the hyper-reality of large photographic artwork.

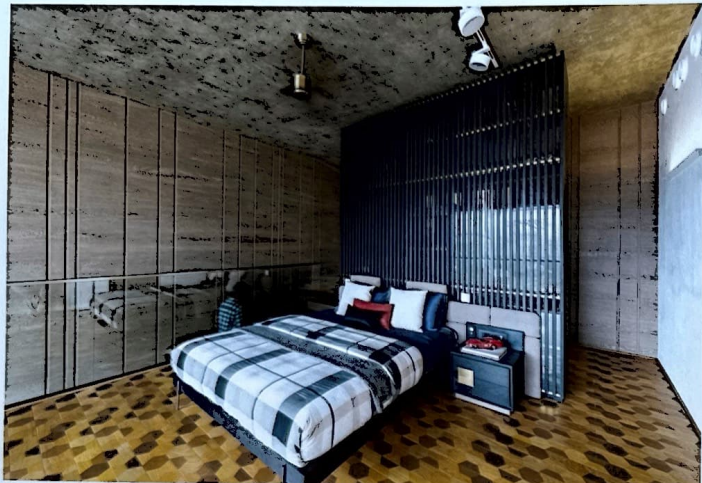
The Pooja room on the first floor makes a departure from the theme of the house and references traditional elements such as columns with ornate capitals, the classic 'pichwai' cow motif, and a series of carved wooden holders for hanging brass bells.

Master bedroom on the first floor, rich bottle green upholstery lends it its own unique identity, and contrasts with the neutral textures and polished brass highlights.

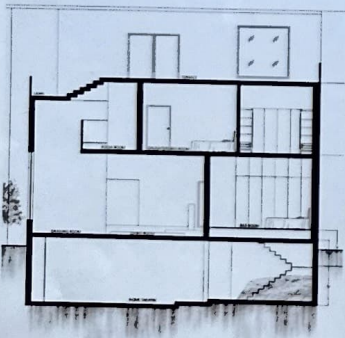
The master bedroom spills over into its own private haven of landscape, complete with sculpted greenery and a calming water body.

The son's private study cum den area, also houses the staircase that leads to his bedroom on the floor above. Here bright colours sing out from amongst warm neutrals and create an informal, inviting lounge.

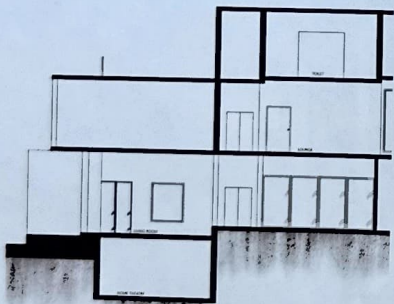




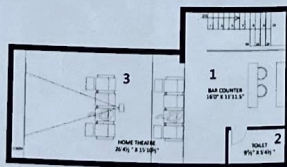
The son's bedroom is richly textured with a patterned warm floor contrasted by severe, heavier treatments of the walls and ceilings. The toilet attached to the son's bedroom is clad in marble and mirror. Its occupied by a remarkable freestanding white wash basin cum counter that holds the space around it like a piece of sculpture.



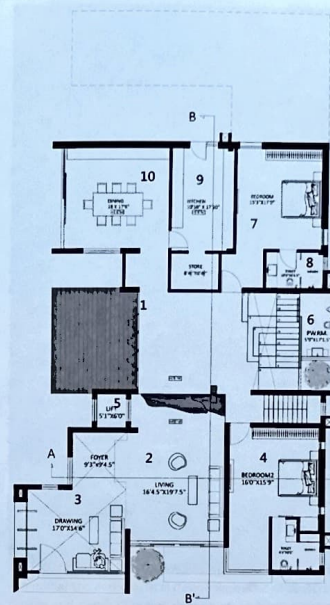
SECTION AA  
SECTIONAL DETAILS



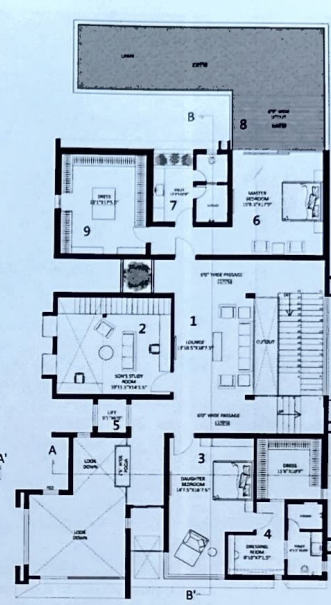
SECTION BB



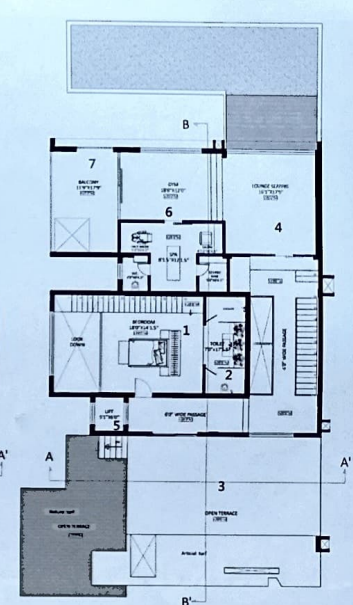
BASEMENT FLOOR PLAN



GROUND FLOOR PLAN



FIRST FLOOR PLAN



SECOND FLOOR PLAN

## LEGEND

### BASEMENT FLOOR

1. BAR COUNTER
2. TOILET
3. HOME THEATRE

### GROUND FLOOR

1. ENTRANCE
2. LIVING AREA
3. DRAWING ROOM
4. BEDROOM-1
5. LIFT

### FIRST FLOOR

1. LOUNGE AREA
2. STUDY AREA
3. BEDROOM
4. TOILET/DRESSING

### SECOND FLOOR

1. BEDROOM
2. TOILET
3. OPEN TERRACE
4. LOUNGE AREA
5. LIFT
6. GYM/SPA
7. BALCONY

### SECOND FLOOR

5. LIFT
6. MASTER BEDROOM
7. MASTER BEDROOM CLOSET

### SECOND FLOOR

1. BEDROOM
2. TOILET
3. OPEN TERRACE
4. LOUNGE AREA
5. LIFT
6. GYM/SPA
7. BALCONY